



Boshco-DUSTEK

Woodworking Machinery and Dust Collection Systems



6K DUNHAM ROAD BILLERICA, MA 01821

P: 978-667-1911 e- mail: heatherd@boshco.com www.boshco-dustek.com

2026 Boshco-Dustek CATALOG

Everything for The Small Cabinet Shop to the Large Factory

NOW REPRESENTING THE FELDER GROUP

IN NEW ENGLAND! Felder-group.com

FELDER G 580 Edgebander
Touch screen Control - Pre-Milling
Felder Quick-Set System **ON SALE!**



DUSTEK
Plastic Bags
Always in
Stock



FELDER Format 4 92M E-Motion Shaper
Touch Screen – Programmable
Raise/Lower/Tilt **ON SALE!**



DUSTEK C1000 Dust Collector
10HP 3-Bag 4000cfm 12" Dia. inlet
Great for CNC's **Special Price**



C1000



SAWSTOP Brake
Cartridges In Stock!

Low Financing!

FELDER KV 925 Vertical Panel Saw
Main & Scoring Blade
Digital Readout Hor/Vert **ON SALE!**



FELDER Kappa 590 e-motion Sliding
Table Saw Touch Screen CNC Fence PCS
Safety System **Delivered and Installed!**



FELDER FORMAT 4 H08 CNC Machining
Center 5ft x 10ft Drill Tool Changer
Onboard Software **Delivered Installed!**



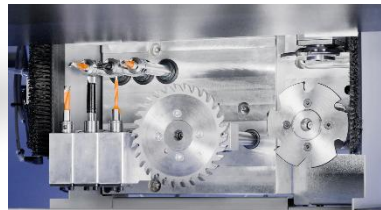
Possible
Trade Ins
Welcome!



FELDER GROUP and FORMAT 4

Full Line of Precision Made Austrian Woodworking Machines to meet your needs

FELDER Format 4 Plan 51L 20IN Jointer
Helical Cutterhead 7.5HP Parallelgram
Fence **Delivered and Installed!**



FELDER Format 4 D-Jet CNC Drill & Dowel
3-Vert Spindles 3 Hor Spindles
Intuitive Touch Screen Control
ON SALE!



FELDER D963 24IN Planer
Helical Cutterhead Digital Thickness
ON SALE!



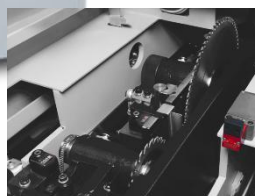
DUSTEK W1500 Whispurr Dust Collector
15HP Super Quiet 5000cfm
60 cubic feet Collection Capacity
SPECIAL PRICE!



W1500



FELDER Format 4 4503L Edgebander
Smartouch Control Pre-Milling
Changeable Glue Pot Infrared Light
Delivered and Installed!



FELDER Format 4 CNC Beam Saw
PC Label Printing Adjustable Air Tables
Delivered and Installed!





FELDER GROUP K 945 S e-motion Sliding Table Saw
with PCS Preventative Contact System



-10ft or 12ft Precision Sliding Table
-Color Touch Sreen Control
-CNC Rip Fence -Quick Change Blade
-Scoring Unit with Electronic Adjustment
Delivered and Installed!



PCS Preventative Contact System prevents
serious injury*

Low Interest Financing with only 1
Payment Down!





FELDER *Format 4* F1000 Professional Edgebander

**Large Touch Screen Control - Fully Programmable - Upper Driven Feed Belt
Top Mounted Glue Pot - 25m/min Fast Feed Rate - 26Ft Machine Length**

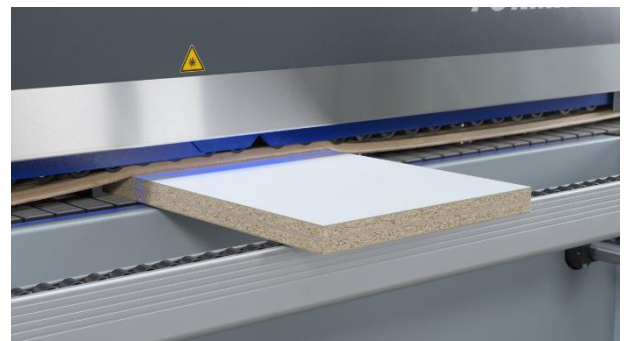
Delivered and Installed!



**Machines
Arrive
Fully
Tooled Up**

**Local
Technicians**

**All Trade
Ins
Considered**





FELDER *Format 4* H80I 5ft x 12ft CNC Machining Center

- 4' x 8'; 5' x 10' or 5' x 12' Smart Vacuum Zones
 - 12HP Router - 11 Position Tool Changer - 12 Spind
 - Complete Onboard F4Integrate Design Software
 - Powered Outfeed Table – 2 x Becker Vacuum Pumps
- Delivered and Installed!**



**Local
Technicians**



**ALL Training
takes Place at
Customer Sight**



Full Line of Austrian Made Quality Machines at Reasonable Prices

FELDER Format 4 Profil 45 M Shaper
7.5HP Motor – Electric Tilting Spindle
Quick Change Spindle

Delivered!



FELDER FB 640 25IN Band Saw
4 HP 3PH – Tilting Table – Rip Fence

Delivered!



Super
High
Quality

FELDER A941 16IN Jointer
5.5KW Motor Helical Cutterhead

Delivered!



FELDER FD 250 Horizontal Mortiser
2.6KW Motor ACCEPTS HOLLOW
CHISELS AND BITS

Delivered!



FELDER FD 29 Dowel Drilling Machine
29 Spindles - Horizontal/Vertical -BLUM

Delivered!



We
Service all
FELDER
Machines



DUSTEK JR-31
3HP 1Phase 230volt
1200cfm On Wheels
Delivered*





High Production Dependable Machines for All Size Shops

FELDER FST 160 Sanding Table
40in x 65in Wood Slats
Uses Existing Dust Collector
Delivered*



FELDER FAT 500S Lifting Table
46" x 81" – 1100lbs. Capacity
Delivered*



FELDER FS900KF Oscillating Edge Sander
Tilting Table – Adjustable Platen - Spindle
Delivered!



FELDER Format 4 HVP Typ 2 Hot Press
4ft x 8ft* - Oil or Water Heated
Ordered to your Specifications
Delivered and Installed!



SawStop Table Saws with Instant Brake Cartridge to Prevent Accidents

**TRADE IN YOUR OLD TABLE SAW
GET DISCOUNT FROM YOUR INSURER***



*New Style
Rip Fence*

SawStop Industrial Cabinet Saw
3HP 1Ph 36" or 52"
5HP 1Ph 36" or 52"
5HP 3Ph 36" or 52"



SawStop Professional Cabinet Saw
1.75HP 1Ph 30" or 36" or 52"
3HP 1Ph 30" or 36" or 52"



SawStop Contractor's Saw
1.75HP 1Ph 30"
36" or 52"



SawStop Brake Cartridge
For 10" Blade
For Dado Set



**Assembly and
Delivery
Available**

**We Maintain a
Large SawStop
Inventory**

10" Carbide Blade
40-Tooth or 80-Tooth



Sliding Table Options
Large Sliding Table
Sliding Crosscut Table





Premier Machine Lines Represented by Boshco-Dustek in New England

Castle TSM-22 Pocket Screw Machine
Individual Router and Drill
Delivered*



Weima WL 6/30HP Scrap Grinder
31"x49" Hopper Carbide Cutterhead
Delivered*



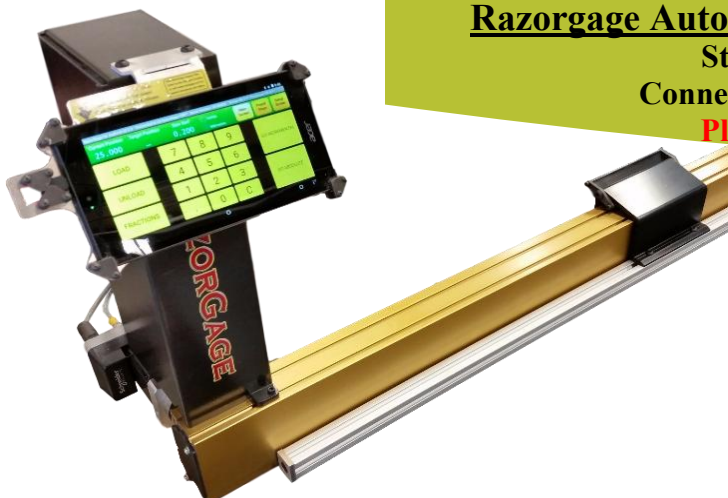
FELDER MVP 31.14 flex
Membrane Press
56in x 124in Tilting Table
Please Call for Quote



Mereen-Johnson Gang Ripsaw
Fixed or Shifting Blades Infeed Deck
Please Call for Quote



Razorgage Automatic Saw Measuring Systems
Stop or Pusher Style
Connect with Office Software
Please call for Quote



RAZORGAGE



Leadermac Throughfeed Moulders Grinders Tooling

Leadermac Smartmac 9" 5-Head Moulder
Cast Iron Frame 6000RPM Spindles
Delivered/Installed*



Leadermas Platinum 9" or 12" 6-Head Moulder
8000RPM Spindles Outboard bearings (12")
Please Call for Quote



Cantek JF330A 12" Profile Grinder
3HP Motor Axial Constant set up
Schneeberger lineal table bearings
Please call for Quote



A photograph of a circular, light-colored ceramic or composite material component, possibly a bearing or seal, with a central hole and radial grooves. The component is shown from a top-down perspective, highlighting its symmetrical design and the central opening.

DUSTEK PARTS and SUPPLIES

Your Source for Everything to keep you Dust Free

Dustek #01-010 Roll 50 Plastic Bags
6mil Heavy Duty Bags
ALL Dustek Parts Ship Daily



Dustek Upper Cloth Filter Bags
48", 60" 72" 96" In Stock



Dustek 01-014 Quick Release Strap
24" Dia. for quick change plastic



Dustek 01-016 Clamp Type Strap
24" Dia. for upper cloth filter bags



Dustek Push Button Magnetic Starters
Overload control 3HP-25HP
Please call for Pricing



W1500

Dustek 01-044 Rubber Barrel Gasket
PSA One Side Fits Around 1-Barrel



Self-Contained Internal Return Dust Collection Systems 2026

Four series to choose from to meet your needs in both capacity and pricing!

Whispurr

The Whispurr series is the newest member of the Dustek line. Very Quiet and Rugged to meet your needs. 10HP – 25HP

Model W1000



CLASSIC

The original Dustek Dust Collector. Proven Design, High Quality, Self-Contained, Internal Return Dust Collectors. 3HP – 20HP

Model C1000



DUSTY

Mobile High-Capacity, High Quality, Self-Contained, Single Phase, 3HP. Available with cloth or plastic collection bags.

Model JR-31



WHISPURR

Ultra Quiet, Self-Contained, Internal Return Dust Collectors, Dramatic Noise Reduction, Award-winning design, 10 – 25HP, "Why Roar when you can Whispurr"

Model W1500





DUSTEK Dust Collector Models and Specifications:

| | Model | Horsepower | Inlet Diameter in Inches | Storage in Cubic Ft. | Filter Area in Sq. Ft. | Width/Height/Length in Inches | Distance of Inlet to Floor in Inches | Filtration & Collection Bags | Weight in Lbs. | Approximate Air Volume CFM | 3 Phase | 1 Phase |
|----------|-------|------------|--------------------------|----------------------|------------------------|-------------------------------|--------------------------------------|------------------------------|----------------|----------------------------|-------------|------------|
| Dusty | JR-31 | 3 | 6 | 24 | 40 | 22x79x61 | 12 | 2 | 185 | 1,200 | | \$1,795.00 |
| | | | | | | | | | | | | |
| | | | | | | | | | | | | |
| | | | | | | | | | | | | |
| | | | | | | | | | | | | |
| Classic | C300 | | 7 | 15 | 25 | 24x113x46 | 71.5 | 1 | 600 | 1,200 | \$4,449.00 | \$5,979.00 |
| | C500 | 5 | 10 | 30 | 50 | 24x113x73 | 72.5 | 2 | 900 | 2,000 | \$5,779.00 | \$7,799.00 |
| | C750 | 7.5 | 12 | 45 | 100 | 24x125x97 | 75 | 3 | 950 | 3,000 | \$6,529.00 | |
| | C1000 | 10 | 12 | 45 | 100 | 24x125x97 | 75 | 3 | 1000 | 4,000 | \$6,729.00 | |
| | C1500 | 15 | 14 | 60 | 132 | 32x137x130 | 83 | 4 | 1250 | 5,000 | \$9,869.00 | |
| | C2000 | 20 | 14 | 60 | 210 | 32x173x130 | 83 | 4 | 1350 | 7,000 | \$10,529.00 | |
| Whispurr | W750 | 7.5 | 12 | 45 | 100 | 38x125x117 | 76 | 3 | 1150 | 3,000 | \$12,399.00 | |
| | W1000 | 10 | 12 | 45 | 100 | 38x125x117 | 76 | 3 | 1350 | 4,000 | \$12,679.00 | |
| | W1500 | 15 | 14 | 60 | 132 | 42x137x149 | 81 | 4 | 1600 | 5,000 | \$16,979.00 | |
| | W2000 | 20 | 14 | 60 | 210 | 42x173x149 | 81 | 4 | 1800 | 7,000 | \$17,699.00 | |
| | W2500 | 25 | 16 | 75 | 260 | 42x173x173 | 81 | 5 | 2000 | 8,500 | \$20,999.00 | |

Leasing and Financing Available.

Each Dustek self-contained dust collection system is supplied with :

- Cloth Filter Bags • Clear Plastic Collection Bags • Quick Release Straps for collection bags
- Clamp Type Straps for filter bags • Magnetic Clips • Operation Manual

All Classic and Whispurr models connected for 3-phase, 208-230/460 volt, 60 Hz (1-phase special order only)

All Economy models connected for 3-phase 230/460 volt, 60 Hz (1-phase special order only)

Dusty model JR-31 is 1-phase 230v only

Need more filter area? Any model can be retrofitted with taller filter bags

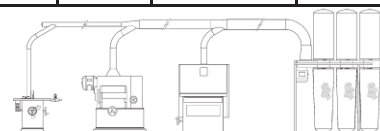


Diagram of DUSTEK Model C750 dust collector installation connected to a 10" tilting arbor saw table, a 24" single surface planer, and a 36" conveyor feed wide belt sander.



DUSTEK Dust Collector Parts, Supplies & Accessories:

Collection Bags

| | | |
|---|--------|--------|
| Plastic Collection Bags – 6mil (roll of 50) | 164.95 | 01-010 |
| Individual Plastic Collection Bag | 4.95 | 01-012 |

Filter Bags

| | | |
|---|--------|---------|
| Filter bag models 300/500 48" | 109.95 | 01-018 |
| Filter bag models 750/1000/1500 60" | 129.95 | 01-020 |
| Filter bag Upgraded 750/1000/1500 72" | 139.95 | 01-020U |
| Filter bag models 2000/2500 96" | 169.95 | 01-022 |
| Custom sizes and different materials available – call for pricing | | |

Straps

| | | |
|---------------|-------|--------|
| Quick-release | 59.95 | 01-014 |
| Clamp-type | 44.95 | 01-016 |

Replacement Rods

| | | |
|--|--------|---------|
| Models 300/500 48" (price per set) | 79.95 | 01-058A |
| Models 750/1000/1500 60" (price per set) | 89.95 | 01-058B |
| Models Upgraded 750/1000/1500 (set) 72" | 94.95 | 01-058U |
| Models 2000-2500 96" (price per set) | 109.95 | 01-058C |

Miscellaneous

| | | |
|----------------------|-------|--------|
| Rubber barrel gasket | 39.95 | 01-044 |
| Shaft gasket (donut) | 19.95 | 01-046 |
| Magnetic clip | 9.95 | 01-032 |

Teflon-Coated Filter Bags (for fine dust applications)

| | | |
|------------------------------|--------|--------|
| Teflon-coated 60" filter bag | 199.95 | 01-034 |
| Teflon-coated 72" filter bag | 209.95 | 01-035 |
| Teflon-coated 96" filter bag | 229.95 | 01-036 |

Model JR-31 Dusty Junior Parts, Supplies & Accessories

| | | |
|---|--------|---------|
| Package of (10) plastic collection bags | 39.95 | 01-052 |
| Box of (100) plastic collection bags | 279.95 | 01-053 |
| Motor 3HP single phase | 469.95 | 01-056 |
| Magnetic control with push button | 349.95 | 01-025 |
| Fabric filter bag | 69.95 | 01-050A |
| Re-usable fabric collection bag | 69.95 | 01-050B |
| Quick-release strap | 39.95 | 01-050 |
| Impeller | 349.95 | 01-042 |

Classic Motors

| | | | |
|-------------|---------------|----------------------|---------|
| Model C300 | 3-ph 749.95 | 01-026A 1-ph 1999.00 | 01-026B |
| Model C500 | 3-ph 849.95 | 01-026C 1-ph 2589.00 | 01-026D |
| Model C750 | 3-ph 1,149.95 | 01-026E | |
| Model C1000 | 3-ph 1,249.95 | 01-026G | |
| Model C1500 | 3-ph 1,649.95 | 01-026H | |
| Model C2000 | 3-ph 2,199.95 | 01-026I | |

Whispurr Motors

| | | |
|-------------|------------------|---------|
| Model W750 | 3-phase 1,199.95 | 01-026J |
| Model W1000 | 3-phase 1,249.95 | 01-026K |
| Model W1500 | 3-phase 1,799.95 | 01-026L |
| Model W2000 | 3-phase 2,099.95 | 01-026M |
| Model W2500 | 3-phase 2,399.95 | 01-026N |

Classic Impellers

| | | | |
|-------------|----------------|-------------|------------------|
| Model C300 | 699.95 01-038A | Model W750 | 1,699.95 01-040A |
| Model C500 | 799.95 01-038B | Model W1000 | 1,799.95 01-040B |
| Model C750 | 779.95 01-038C | Model W1500 | 2,099.95 01-040C |
| Model C1000 | 799.95 01-038D | Model W2000 | 2,299.95 01-040D |
| Model C1500 | 995.95 01-038E | Model W2500 | 2,399.95 01-040E |

Whispurr Impellers

Magnetic Controls with Push Button

| | | | |
|------------|----------------|------------------------|---------|
| Model 300 | 3-phase 299.95 | 01-024A 1-phase 319.95 | 01-024B |
| Model 500 | 3-phase 319.95 | 01-024C 1-phase 349.95 | 01-024D |
| Model 750 | 3-phase 339.95 | 01-024E 1-phase 379.95 | 01-024F |
| Model 1000 | 3-phase 399.95 | 01-024G | |
| Model 1500 | 3-phase 499.95 | 01-024H | |
| Model 2000 | 3-phase 519.95 | 01-024I | |
| Model 2500 | 3-phase 599.95 | 01-024J | |



SERVICES Offered By Boshco-Dustek

***Delivery by Boshco-Dustek Truck included within 100 Miles of Billerica MA
Rigging (if Required) may be additional Installation by Boshco-Dustek Technician
Financing Quotes are for 60 or 72 Months; 1 payment Down.**

Field Repair Service

**We Can Repair your Down Machines
Please call to Schedule**



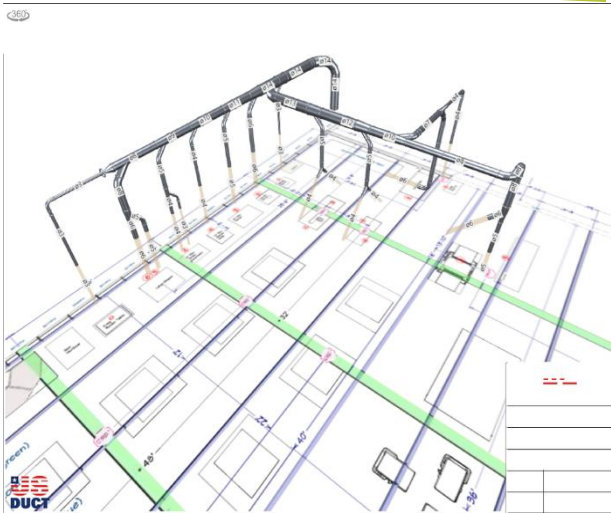
Dustek Custom Size Cloth Filter Bags

**We Have Special Bags Made Regularly
Please call for Quote**



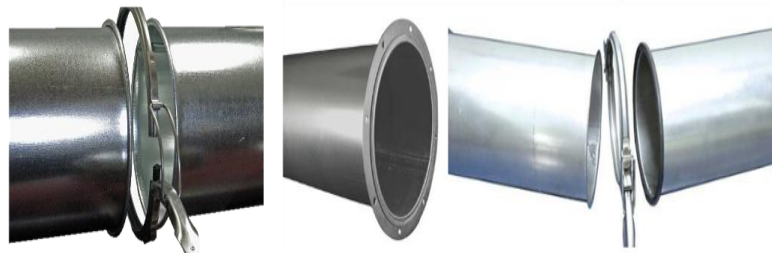
Custom Duct Work Design/Install

**Let Us Design & Install Your System
Please call for Quote**



U S Duct Snap Together Duct Work

**We sell All Needed Parts to connect
your shop machines to a Dustek
Please call for Quote**



Appraisal Services

**We Offer All Types of Onsite Equipment
Appraisals Fair market Auction Etc.
Please call for Quote**



Equipment Financing

**We Work Closely with Our Customers
Throughout the Financing Process**

**\$10,000 (\$202.90/month*)
\$25,000 (\$507.75/month*)
\$50,000 (\$1,015.50/month*)
\$100,000 (\$2,029.00/month*)
60 Months, 1 Payment Down**

Please call for Application

